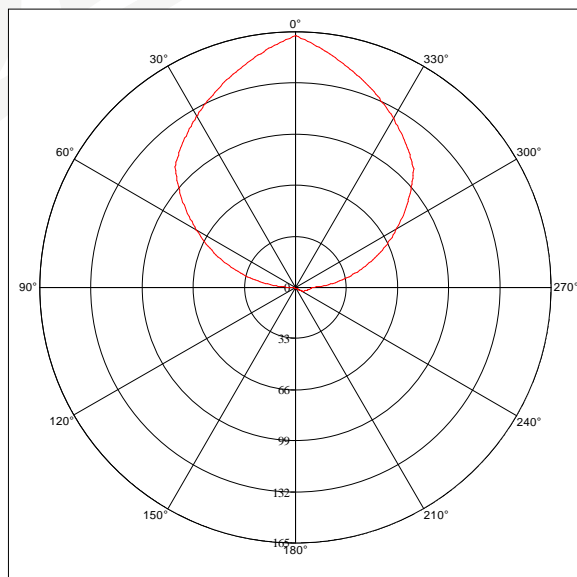
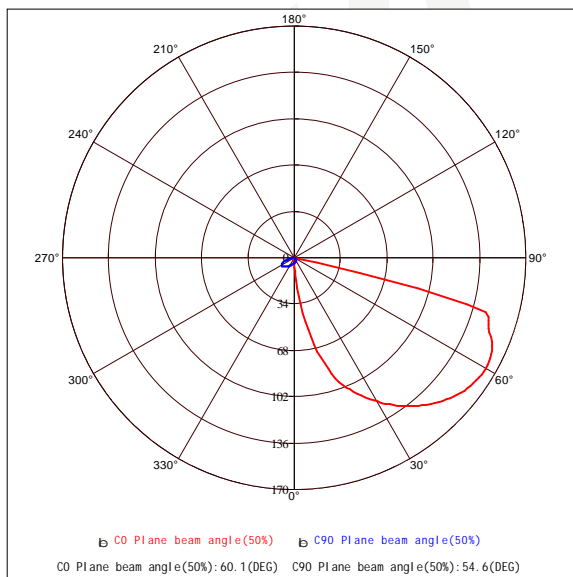


Goniophotometer Test Report

Measured Para U: 220.2V I: 37.8mA P: 4.98W PF: 0.599 Test LM: 426.291m						
Lamp Name: LED STEP LIGHT		Lamp Type:		Weight(kg):		
Lamp ID: LPWL-05A01-Y		Lamp Spec: LPWL-05A01-Y		Shape Size:		
Manufactory: LIPER		Sur(m ²):		Protect Angle(Deg):		
Light Source Data			Photometric Data			
Model	LPWL-05A01-Y		Peak Value(cd)	162.5	Efficiency(lm/w)	85.6
Nominal P(w)	1.0		Position	0.0, 60.0	UP(C0-C180)	0.0
Rated Volt(v)	1.0		Total Flux(lm)	426.29	Down(C0-C180)	49.6
Rated Flux(lm)	1.0		Up Flux Rate(%)	0.0	UP(C180-C360)	0.0
Illuminant QTY	1		Dw Flux Rate(%)	100.0	Down(C180-C360)	50.4

Planar Intensity Distribution Curve

Peak Point Conical surface Curve



Gama Angle Range: -90 - 90(Deg)

Gama interval(Deg): 1

Temperature(Deg): 30

Tester: zxcg

Distance(m): 7.000

Test System: ZWL Goniophotometer System V3.0

C Angle Range: 0 - 180(Deg)

C interval(Deg): 45

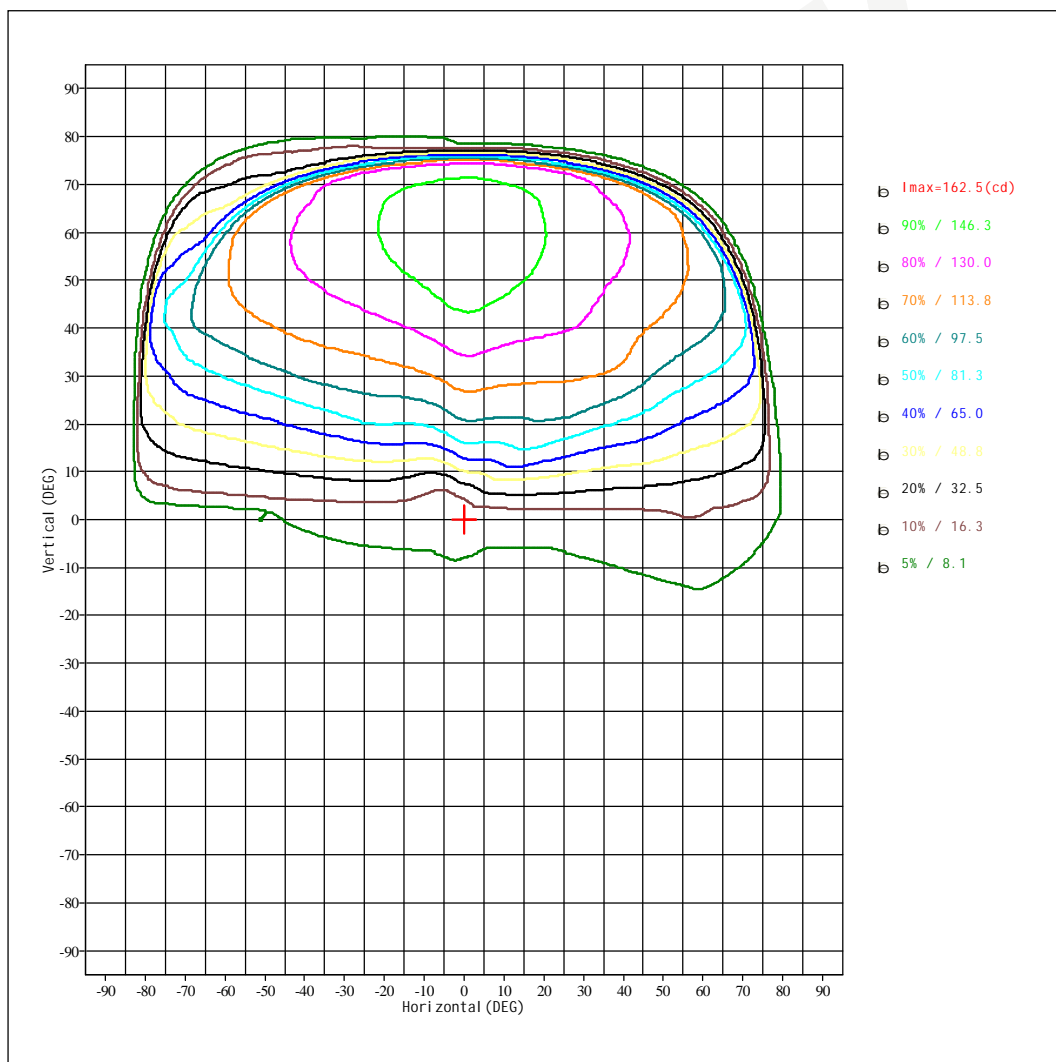
Humi di ty(%): 60

Date: 2023-10-11

Remark:

Measured Para U: 220.2V I: 37.8mA P: 4.98W PF: 0.599 Test LM: 426.29lm		
Lamp Name: LED STEP LIGHT	Lamp Type:	Weight(kg):
Lamp ID: LPWL-05A01-Y	Lamp Spec: LPWL-05A01-Y	Shape Si ze:
Manufactory: LIPER	Sur(m^2):	Protect Angle(Deg):

Planar IsoCandela Curve



Gama Angle Range: -90 - 90(Deg)

Gama interval (Deg): 1

Temperature(Deg): 30

Tester: zxcg

Distance(m): 7.000

Test System: ZWL Goniophotometer System V3.0

C Angle Range: 0 - 180(Deg)

C interval (Deg): 45

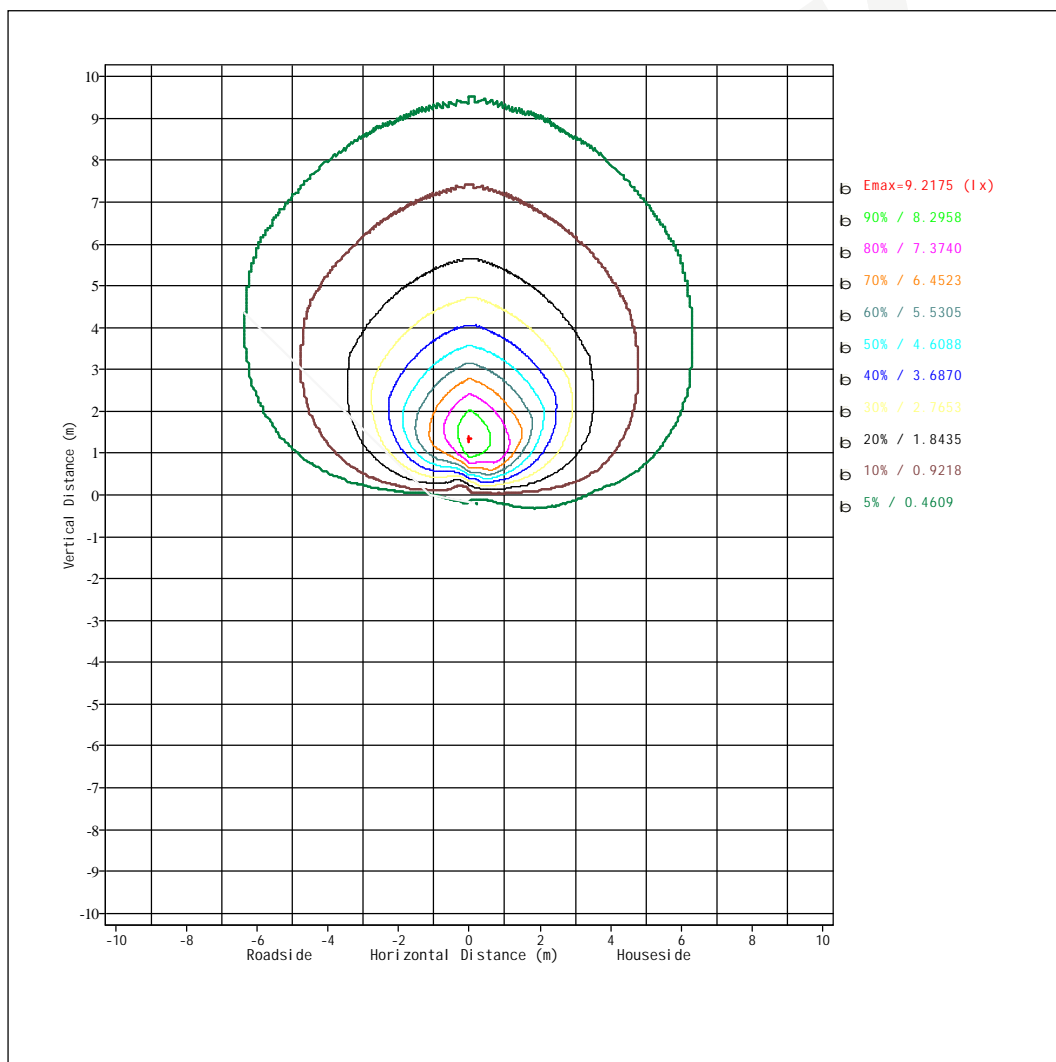
Humi di ty(%): 60

Date: 2023-10-11

Remark:

Measured Para U: 220.2V I: 37.8mA P: 4.98W PF: 0.599 Test LM: 426.291m		
Lamp Name: LED STEP LIGHT	Lamp Type:	Weight(kg):
Lamp ID: LPWL-05A01-Y	Lamp Spec: LPWL-05A01-Y	Shape Si ze:
Manufactory: LIPER	Sur(m^2):	Protect Angle(Deg):

Planar Isolux curve



Gama Angle Range: -90 - 90(Deg)

Gama interval (Deg): 1

Temperature(Deg): 30

Tester: zxg

Distance(m): 7.000

Test System: ZWL Goniophotometer System V3.0

C Angle Range: 0 - 180(Deg)

C interval (Deg): 45

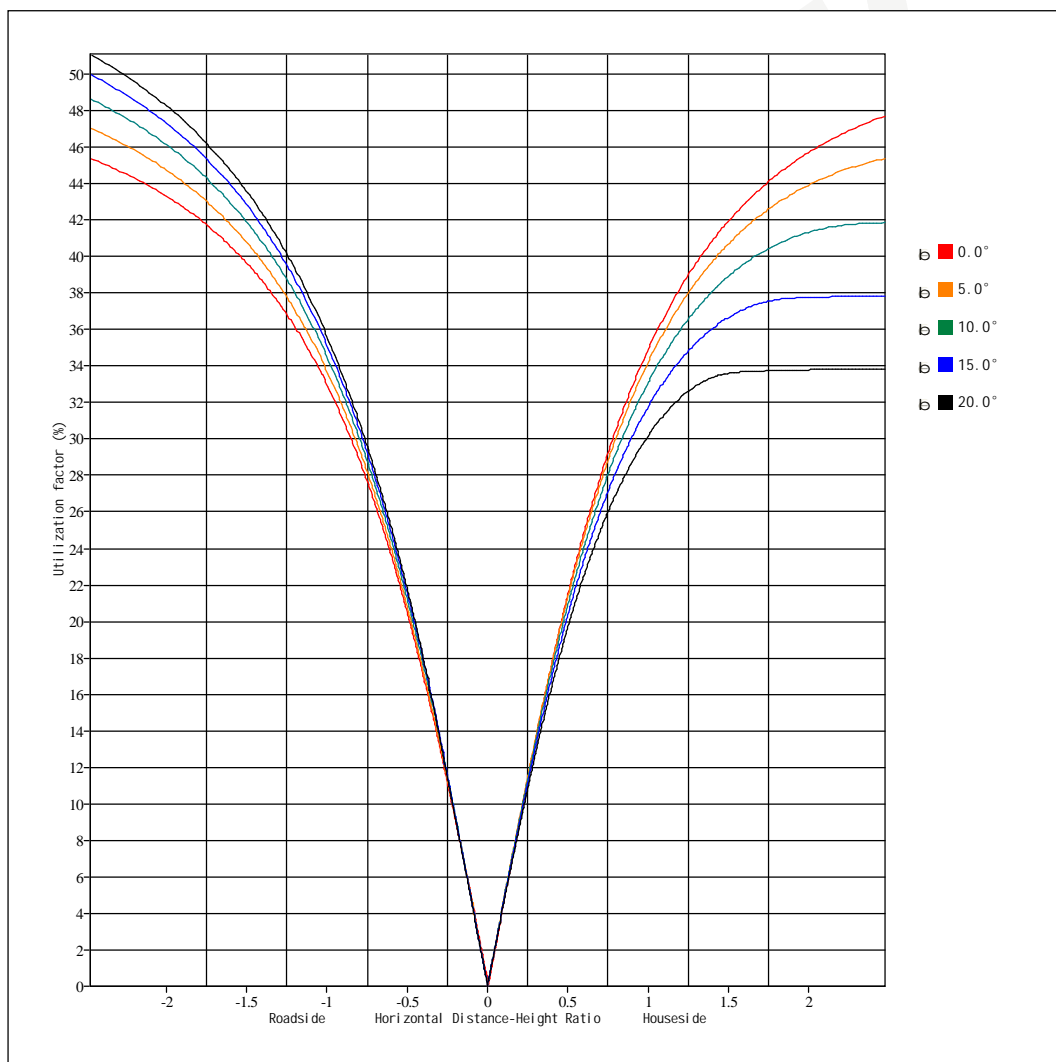
Humi di ty(%): 60

Date: 2023-10-11

Remark:

Measured Para U: 220.2V I: 37.8mA P: 4.98W PF: 0.599 Test LM: 426.291m		
Lamp Name: LED STEP LIGHT	Lamp Type:	Weight(kg):
Lamp ID: LPWL-05A01-Y	Lamp Spec: LPWL-05A01-Y	Shape Si ze:
Manufactory: LIPER	Sur(m ²):	Protect Angle(Deg):

Utilization Coefficient



Gama Angle Range: -90 - 90(Deg)

Gama interval(Deg): 1

Temperature(Deg): 30

Tester: zxg

Distance(m): 7.000

Test System: ZWL Goniophotometer System V3.0

C Angle Range: 0 - 180(Deg)

C interval(Deg): 45

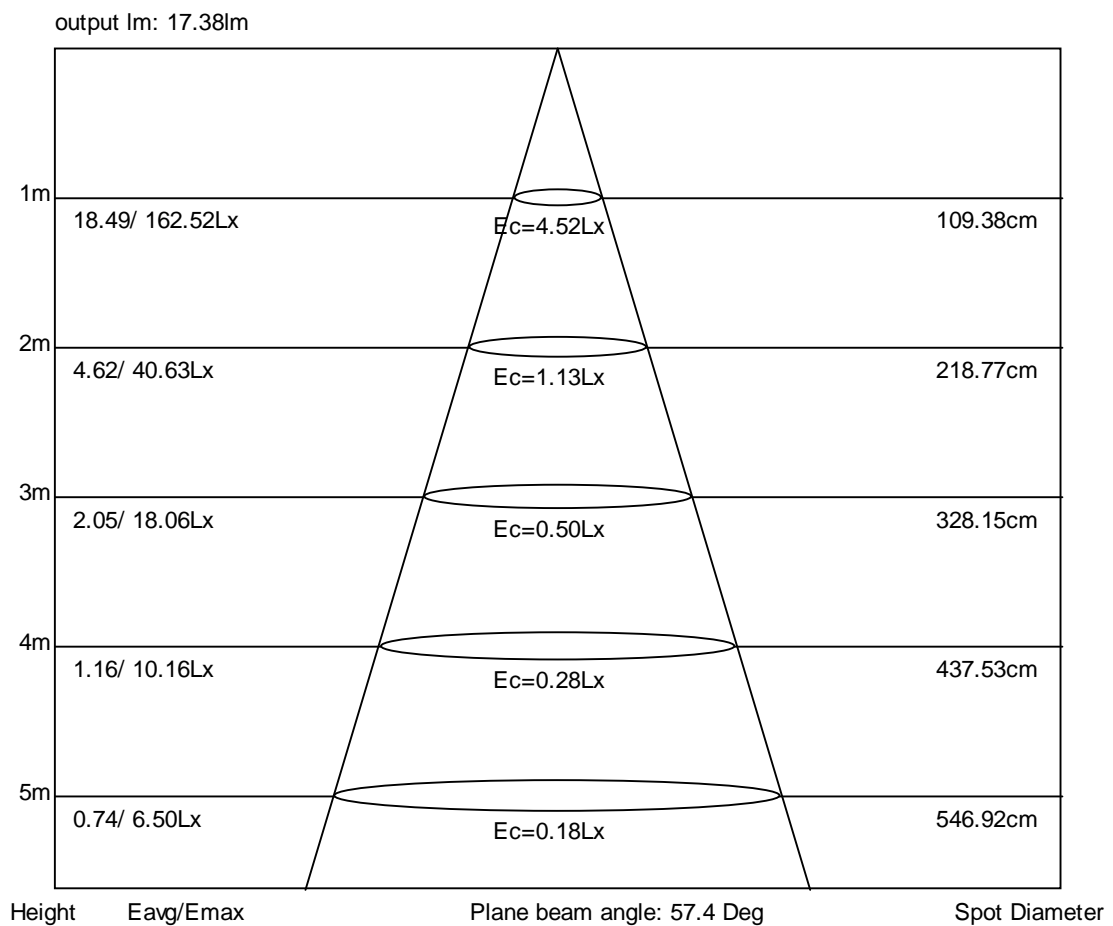
Humi di ty(%): 60

Date: 2023-10-11

Remark:

Measured Para U: 220.2V I: 37.8mA P: 4.98W PF: 0.599 Test LM: 426.291m		
Lamp Name: LED STEP LIGHT	Lamp Type:	Weight(kg):
Lamp ID: LPWL-05A01-Y	Lamp Spec: LPWL-05A01-Y	Shape Si ze:
Manufactory: LIPER	Sur(m ²):	Protect Angle(Deg):

Average Illumination



Gama Angle Range: -90 - 90(Deg)

Gama interval (Deg): 1

Temperature(Deg): 30

Tester: zxg

Distance(m): 7.000

Test System: ZWL Goniophotometer System V3.0

C Angle Range: 0 - 180(Deg)

C interval (Deg): 45

Humi di ty(%): 60

Date: 2023-10-11

Remark:

Measured Para U: 220.2V I: 37.8mA P: 4.98W PF: 0.599 Test LM: 426.29Im		
Lamp Name: LED STEP LIGHT	Lamp Type:	Weight(kg):
Lamp ID: LPWL-05A01-Y	Lamp Spec: LPWL-05A01-Y	Shape Size:
Manufactory: LIPER	Sur(m ²):	Protect Angle(Deg):

Ring-shaped Flux Data Table

Gm\C(Deg)	0	45	90	135	180	225	270	315	Range	Ring	T(lm)
5	19.8	5.8	3.65	3.44	3.16	2.56	4.06	20.2	0-5	0.15	0.15
10	50.7	17.3	3.4	2.68	2.48	2.16	4.45	42.7	5-10	0.86	1.01
15	78.4	36.9	3.19	2.17	2.11	1.86	4.95	63.7	10-15	2.42	3.43
20	98.8	56.8	3	1.83	1.76	1.56	5.58	80.4	15-20	4.62	8.05
25	111	72.8	2.84	1.52	1.45	1.34	6.32	92.1	20-25	7.1	15.2
30	123	84.9	2.63	1.26	1.23	1.09	6.93	100	25-30	9.71	24.9
35	134	93.3	2.43	1.05	1.11	0.93	7.36	107	30-35	12.3	37.2
40	143	99.4	2.21	0.87	0.99	0.86	8.14	112	35-40	14.9	52.1
45	151	104	1.99	0.78	0.97	0.75	9.21	116	40-45	17.4	69.5
50	157	107	1.7	0.73	0.89	0.76	10.3	116	45-50	19.7	89.2
55	161	109	1.16	0.68	0.88	0.68	10.9	111	50-55	21.5	111
60	163	110	0.71	0.61	0.93	0.69	10.8	108	55-60	22.8	134
65	160	109	0.53	0.6	0.95	0.63	9.74	105	60-65	23.8	157
70	151	106	0.56	0.56	0.86	0.53	7.64	101	65-70	23.9	181
75	119	97.6	0.54	0.52	0.85	0.51	4.81	93.3	70-75	23.1	204
80	1.26	85.4	0.44	0.51	0.77	0.56	2.84	1.18	75-80	11.1	215
85	0.59	1.49	0.49	0.51	0.77	0.59	1.18	0.41	80-85	3.05	219
90	0.7	0.64	0.47	0.5	0.81	0.62	0.53	0.69	85-90	0.35	219
95									90-95		
100									95-100		
105									100-105		
110									105-110		
115									110-115		
120									115-120		
125									120-125		
130									125-130		
135									130-135		
140									135-140		
145									140-145		
150									145-150		
155									150-155		
160									155-160		
165									160-165		
170									165-170		
175									170-175		
180									175-180		

Gama Angle Range: -90 - 90(Deg)

Gama interval (Deg): 1

Temperature(Deg): 30

Tester: zxcg

Distance(m): 7.000

Test System: ZWL Goniophotometer System V3.0

C Angle Range: 0 - 180(Deg)

C interval (Deg): 45

Humidity(%): 60

Date: 2023-10-11

Remark:

Measured Para U: 220.2V I: 37.8mA P: 4.98W PF: 0.599 Test LM: 426.291m		
Lamp Name: LED STEP LIGHT	Lamp Type:	Weight (kg):
Lamp ID: LPWL-05A01-Y	Lamp Spec: LPWL-05A01-Y	Shape Si ze:
Manufactory: LIPER	Sur(m^2):	Protect Angle(Deg):

CD Table

Gm\C(Deg)	0	20	40	60	80	100	120	140	160	180	200	220	240	260	280	300	320	340
5.0	19.8	13.7	7.33	5.09	4.12	3.6	3.51	3.41	3.28	3.16	2.9	2.63	3.05	3.73	7.6	14.9	20.2	20
10.0	50.7	36.1	20.9	12.7	6.44	3.24	2.92	2.66	2.57	2.48	2.34	2.2	2.91	3.95	12.8	30.2	43.6	47.2
15.0	78.4	60.2	41.5	25.9	10.6	2.96	2.5	2.16	2.13	2.11	2	1.88	2.87	4.27	17.8	44.4	65.3	72
20.0	98.8	80.4	61.4	39.2	14.8	2.74	2.22	1.82	1.79	1.76	1.67	1.58	2.88	4.7	21.9	55.8	82.4	90.8
25.0	111	94.5	77.1	49.9	18.2	2.55	1.95	1.51	1.48	1.45	1.4	1.35	2.97	5.23	25.1	63.9	94.2	103
30.0	123	106	89.1	57.9	20.6	2.33	1.71	1.26	1.25	1.23	1.17	1.11	3.01	5.65	27.4	69.7	103	113
35.0	134	116	97.7	63.5	22.3	2.13	1.5	1.06	1.08	1.11	1.03	0.95	3.04	5.96	29.1	74.2	110	122
40.0	143	124	104	67.5	23.5	1.92	1.31	0.88	0.94	0.99	0.93	0.88	3.25	6.55	30.9	77.9	115	129
45.0	151	130	109	70.4	24.3	1.72	1.18	0.8	0.88	0.97	0.87	0.77	3.53	7.36	32.5	80.9	120	135
50.0	157	135	113	72.6	24.8	1.49	1.05	0.75	0.82	0.89	0.83	0.77	3.87	8.17	33.4	81.3	120	139
55.0	161	138	115	73.9	24.8	1.05	0.83	0.7	0.79	0.88	0.79	0.7	4.03	8.65	32.8	78.2	116	139
60.0	163	140	116	74.2	24.6	0.69	0.64	0.64	0.79	0.93	0.82	0.71	4	8.58	32.1	76.2	114	139
65.0	160	138	114	73.3	24.2	0.54	0.58	0.64	0.8	0.95	0.81	0.66	3.62	7.74	30.7	74	111	136
70.0	151	131	111	71.5	23.7	0.56	0.56	0.6	0.73	0.86	0.71	0.57	2.86	6.08	28	70.2	106	129
75.0	119	110	100	65.8	21.8	0.54	0.53	0.56	0.7	0.85	0.7	0.55	1.92	3.87	24.2	64.2	96.1	108
80.0	1.26	38.1	76.2	57.5	19	0.46	0.49	0.54	0.66	0.77	0.68	0.59	1.31	2.34	2.47	1.72	1.19	1.22
85.0	0.59	0.99	1.4	1.16	0.71	0.49	0.5	0.54	0.66	0.77	0.69	0.61	0.78	1.05	1.01	0.66	0.43	0.51
90.0	0.7	0.67	0.65	0.58	0.5	0.47	0.49	0.54	0.68	0.81	0.73	0.64	0.59	0.55	0.57	0.64	0.69	0.69
95.0																		
100.0																		
105.0																		
110.0																		
115.0																		
120.0																		
125.0																		
130.0																		
135.0																		
140.0																		
145.0																		
150.0																		
155.0																		
160.0																		
165.0																		
170.0																		
175.0																		
180.0																		

Gama Angle Range: -90 - 90(Deg)

C Angle Range: 0 - 180(Deg)

Gama interval (Deg): 1

C interval (Deg): 45

Temperature(Deg): 30

Humi di ty(%): 60

Tester: zxg

Date: 2023-10-11

Distance(m): 7.000

Remark:

Test System: ZWL Goniophotometer System V3.0